



Triflex Lehr Loader



The Triflex lehr loader is suitable for handling high speed production. Due to the machine's flexibility and flexible control, it is the industry's leading choice for manufacturers of unstable cosmetic and pharmaceutical products. It is capable of operating with a cross conveyor speed of up to 35 meters per minute and is available with various options such as a fully electronically adjustable ware steady mechanism for those articles that need that extra stability when being loaded into the lehr. This machine has full job storage facility, giving reduced set-up time and down time.

Features and Benefits

- Programmable pushbar motion
- Easy to use 15" colour touch screen interface
- Full job storage and on-line editing facility
- Easy, accessible user help files
- Staggered stack and bottle sort facility
- Ware reject control
- Integral control panel & cooling system as standard
- 3 identical brushless AC Servo motors
- Remote diagnostic facility available
- USB connection for job data back up or transfer
- Recommended service every 5 years
- Synchronised by trigger impulse from IS machine controller
- Password protected operational features
- Operator interface available in customer's language
- Mounting rails fitted as standard
- Adjustable pushbar mounting
- IPC with removable hard drive

Triflex Lehr Loader

Example of Screen Images



Current Job view



Profile Parameters



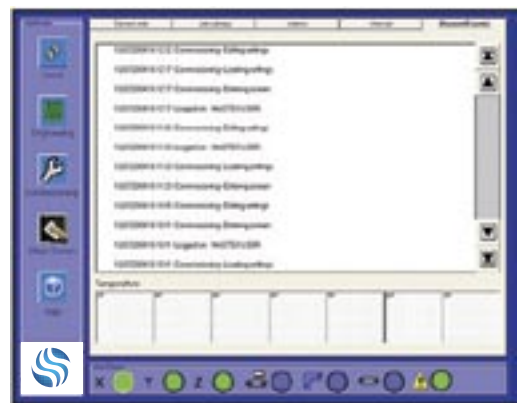
Job Library



XY Push profile



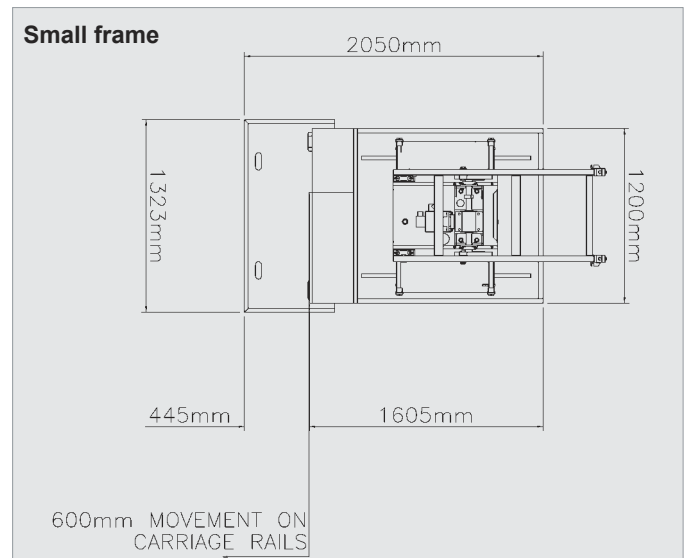
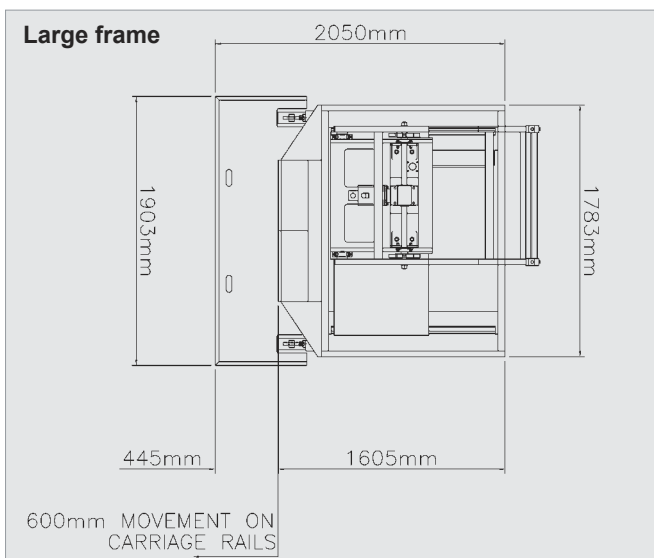
Manual Page



Recent Events Log

Triflex Lehr Loader

Triflex footprints



Service Requirements

- Connection to centralised Lincoln lubrication system (if applicable)
- Lubrication frequency – 4-6 cycles per hour depending on speeds
- Trigger pulse from IS machine controller
- Compressed air

Available Options

- Remote stand alone control panel
- Large and small frame sizes

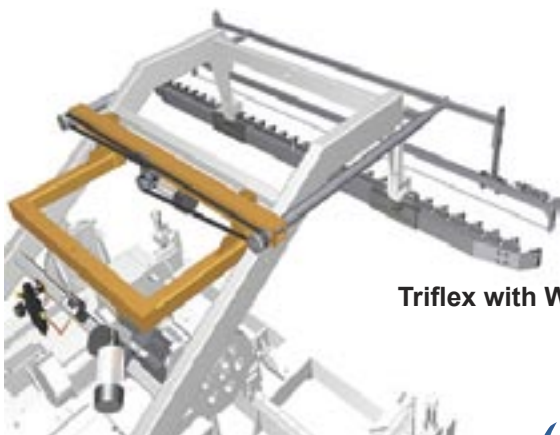
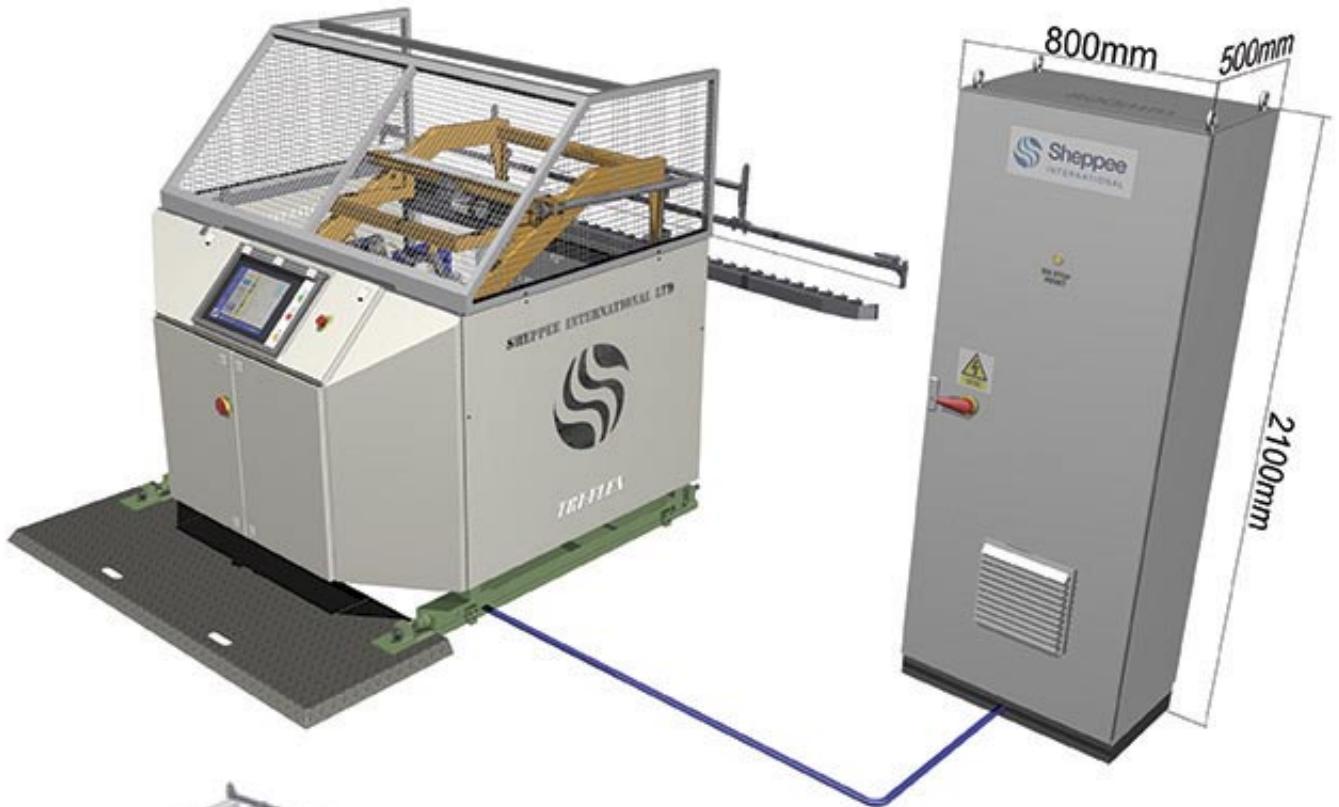
- Fully adjustable ware steady assembly with on-line electrical adjustments
- Air conditioning unit for integrated controls
- 4th Axis drive to drive cross conveyor
- 5th Axis drive to drive ware transfer
- 6th Axis to drive machine conveyor
- Lubrication system
 - Grease – uses integrated grease pump and timer control
- Back-up laptop

Technical Specification

Operating speed:	Up to 20 cycles per minute (maximum cross conveyor speed of 35m/min)
Controller type:	Servo drives with integrated motion control
Minimum lehr operating height:	700mm
Operating temperature of motors:	Up to 125°C
Compressed cooling air consumption	3 minimum - 5 Bar recommended
Control panel cooling air consumption	30m ³ /hour (Max)
Required ware steady air pressure	0-3Bar
Ware steady air consumption	0.09m ³ /hour at 10 cycles per minute

Triflex Lehr Loader

Triflex with Remote Control Panel



Triflex with Ware Steady and pushbar



UK: Halifax Way, Airfield Business Park, Elvington, York, YO41 4AU
T: +44 1904 608 999 F: +44 1904 608 777
E: sales@sheppee.com

China: Sheppee-AP Sales & Support Centre, Shenzhen, China,
T: +86 755 8222 5976 E: sales@si-ap.com

V1.0